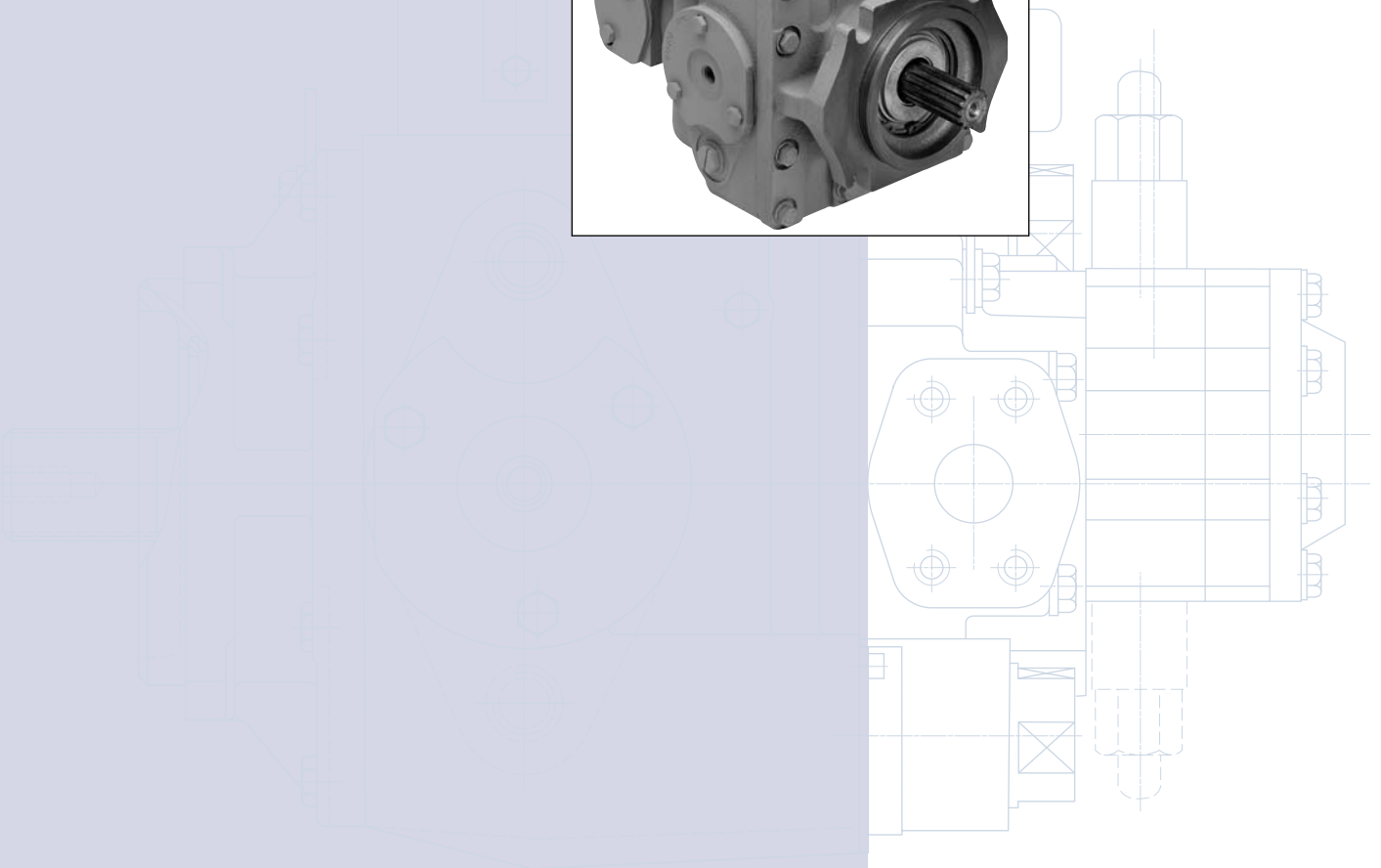
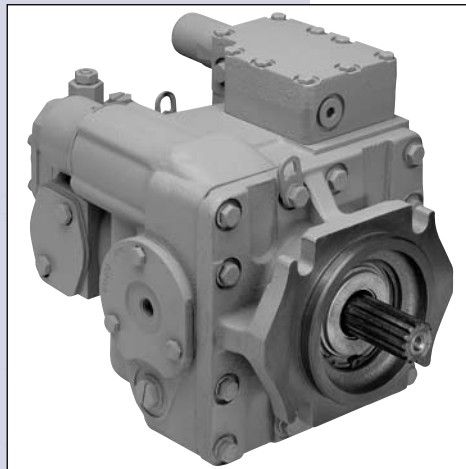
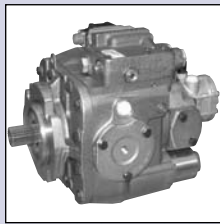
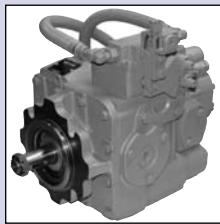




Series 20 Axial Piston Pumps

Technical Information



Introduction

Sauer-Danfoss a world leader in hydraulic power systems has developed a family of axial piston pumps.

Description

Sauer-Danfoss axial piston variable displacement pumps are of swash plate design with variable flow capability suitable for hydrostatic transmissions with closed loop circuit. Tilting the swash plate to the opposite side of the neutral or zero displacement position reverses flow direction.

Sauer-Danfoss axial piston variable displacement pumps are well engineered and easy to handle.

The full-length shaft with a highly efficient tapered roller bearing arrangement offers a high loading capacity for external radical forces.

The hydro-mechanical servo displacement control maintains the selected swash plate position and hence pumps displacement.

Upon release of the control handle, the swash plate automatically returns to zero position and the flow reduces to zero.

High case pressures can be achieved without leakage even at the lowest temperatures by using suitable shaft seals.

The servo valve arrangement offers the facility to incorporate function regulators and remote control systems.

Axial piston units are designed for easy servicing. Complete dismantling and reassembly can be carried out with standard hand tools, and all components or sub-assemblies are replaceable.

Axial piston variable displacement pumps of the Sauer-Danfoss pattern are made by licensed producers worldwide, providing consistent service and fully interchangeable parts.

Typical markets

- Industrial
- Mining
- Transit Mixer
- Utility Vehicles

© 2011 Sauer-Danfoss. All rights reserved.

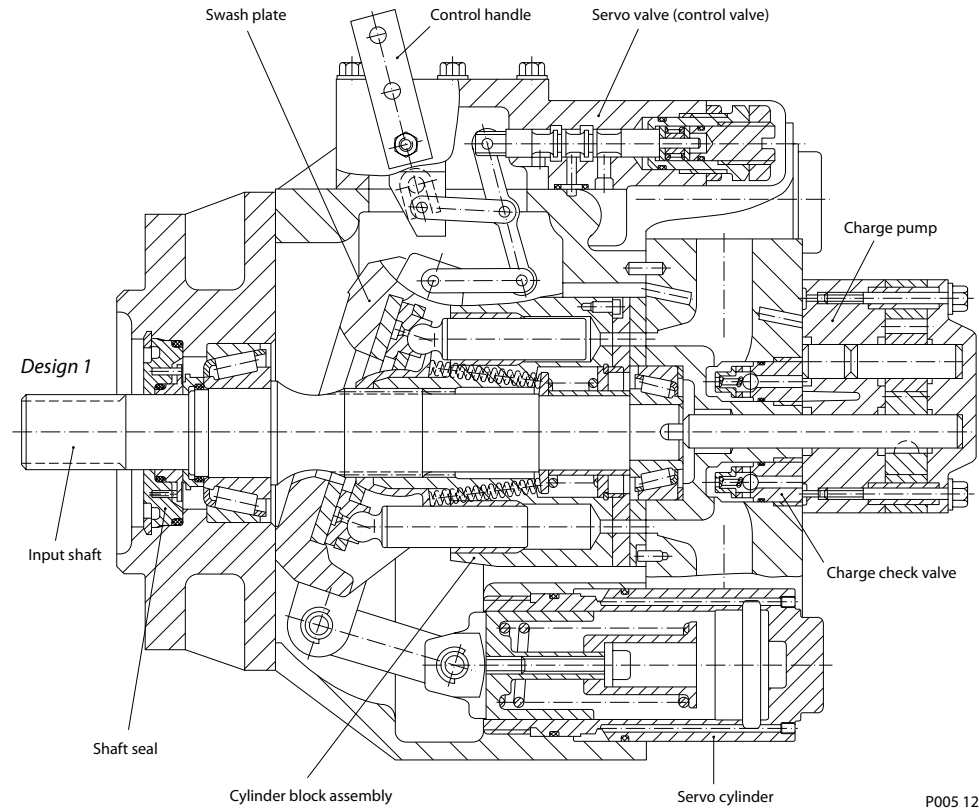
Sauer-Danfoss accepts no responsibility for possible errors in catalogs, brochures and other printed material. Sauer-Danfoss reserves the right to alter its products without prior notice. This also applies to products already ordered provided that such alterations can be made without affecting agreed specifications. All trademarks in this material are properties of their respective owners. Sauer-Danfoss, the Sauer-Danfoss logotype, the Sauer-Danfoss S-icon, PLUS+1™, What really matters is inside® and Know-How in Motion™ are trademarks of the Sauer-Danfoss Group.

Front cover illustrations: F005 104, F000 248, F000 150, F000 249

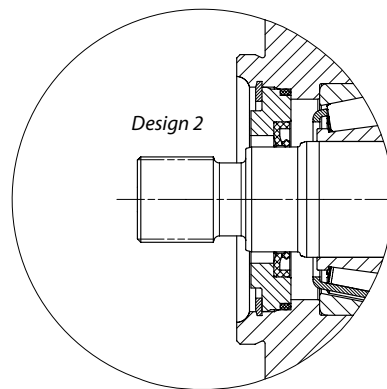
General Description	Axial Piston Variable Displacement Pump	4
	Pump and Motor Circuit Description	5
	Pump circuit schematic.....	5
Technical Specification	Technical Parameters	6
	Design	6
	Type of mounting	6
	Pipe connections	6
	Direction of rotation	6
	Installation position	6
	External drain fluid loss	6
	Hydraulic Parameters.....	7
	System pressure range, input p_1	7
	System pressure range, output p_2	7
	Case pressure	7
	Hydraulic fluids	7
	Temperature range.....	7
	Viscosity range.....	7
	Filtration	7
	Shaft load.....	7
	Hydraulic Parameters.....	8
	Determination of Nominal Pump Sizes	8
	Based on SI units/Based on US units.....	8
	Servo Displacement Control (linear response)	9
	Pump flow direction	9
Reversing time	10	
Reset time.....	11	
Changing reversing and reset time.....	11	
Dimensions – Frame Size 070 and 089	Configuration PS, displacement control VML 1	12
	Configuration AA 010, displacement control VML 1	14
Dimensions – Frame Size 334	Configuration PS, displacement control VML 1	15
	Configuration AA 010, displacement control VML 1	17

**Axial Piston Variable
 Displacement Pump**

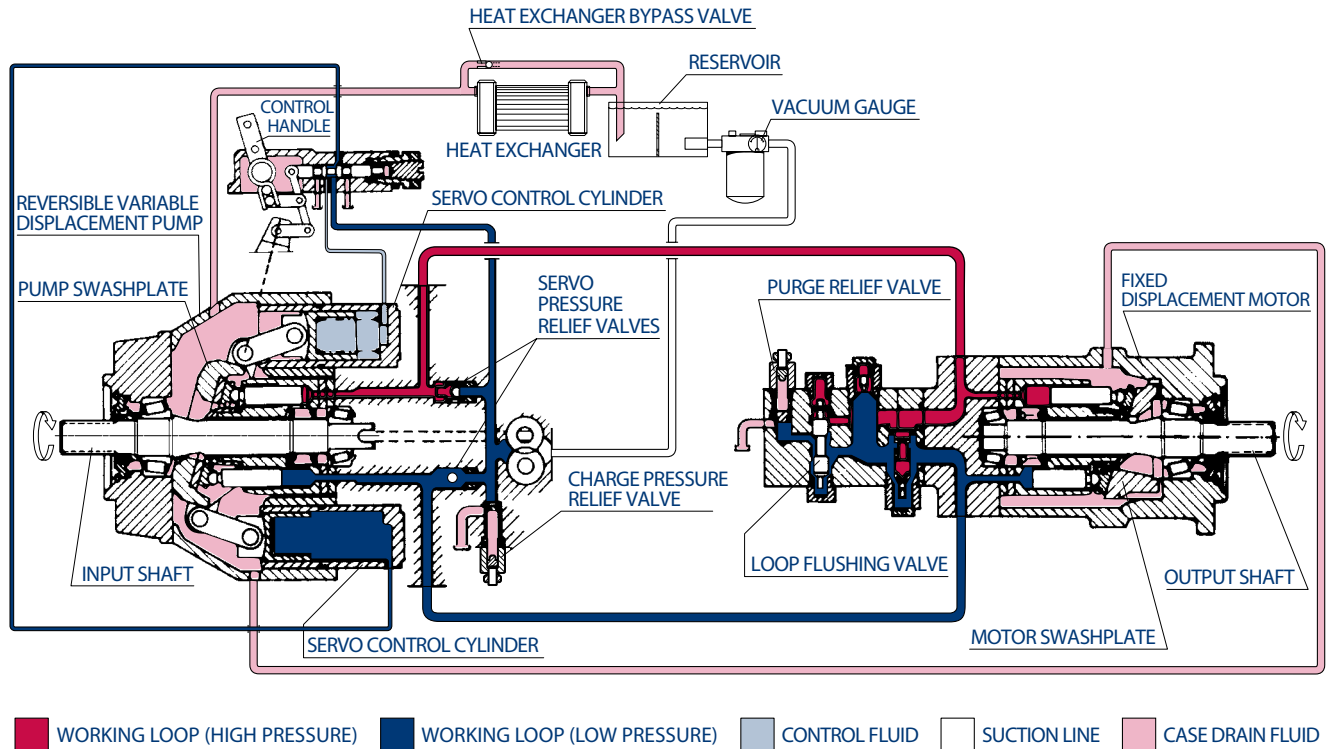
Sectional View



P005 121E



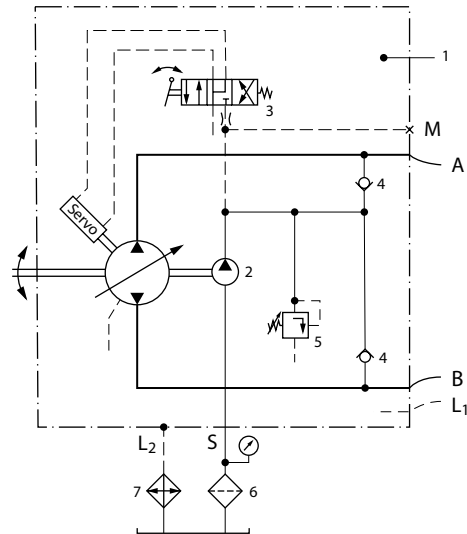
Pump and Motor Circuit Description



P000 027E

Above figure shows schematically the function of a hydrostatic transmission using an axial piston variable displacement pump and a fixed displacement motor.

Pump Circuit Schematic



Designation:

- 1 = Variable displacement pump
- 2 = Charge pump
- 3 = Servo control valve
- 4 = Charge check valve
- 5 = Charge relief valve
- 6 = Filter
- 7 = Heat exchanger

Ports:

- A, B = Main pressure ports (working loop)
- S = Suction port - charge pump
- L1, L2 = Drain ports
- M = Gauge port - charge pressure

P000 012

Technical Parameters

Design

Axial piston pump of swash plate design, with variable displacement.

Type of mounting

SAE four bolt flanges.

Pipe connections

Main pressure ports: SAE split flange

Remaining ports: SAE O-ring boss

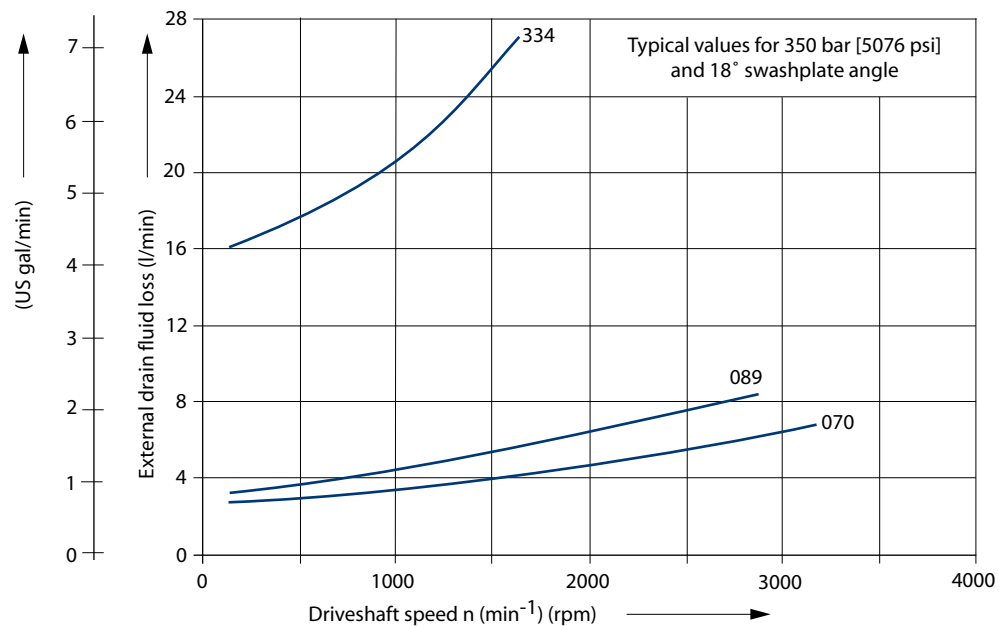
Direction of rotation

Clockwise or counterclockwise (viewing from the input shaft).

Installation position

Optional; pump housing must be always filled with hydraulic fluid.

External drain fluid loss



P005 105E

Hydraulic Parameters

System pressure range, input p_1

Variable displacement pump:

Charge pressure nominal: 13 bar [189 psi] above case pressure

Charge pressure minimum: 8 bar [116 psi], intermittent only

Charge pump input pressure:

Min. allowable pressure, continuous = 0.75 bar [10.9 psi] absolute

Min. allowable pressure, intermittent = 0.50 bar [7.3 psi] absolute (for cold start)

Charge pump output pressure:

Max. operating pressure = 35 bar [508 psi] above case pressure

System pressure range, output p_2

Pressure on port A or B: Max. operating pressure $\Delta p = 420$ bar [6092 psi]

Max. high pressure setting $\Delta p = 460$ bar¹ [6672 psi]

¹only with POR-valve

Case pressure

Max. rated pressure = 2.5 bar [36.3 psi]

Intermittent = 5.0 bar [72.5 psi]

Hydraulic fluids

Refer to Sauer-Danfoss publications *Hydraulic Fluids and Lubricants*, **520L0463** and *Experience with Biodegradable Hydraulic Fluids*, **520L0465**.

Temperature range

$\vartheta_{\min} = -40$ °C [-40 °F]

$\vartheta_{\max} = 95$ °C [203 °F]

Viscosity range

$v_{\min} = 7$ mm²/s [49 SUS*]

$v_{\max} = 1000$ mm²/s [4630 SUS*] (intermittent cold start)

Recommended viscosity range: 12 - 60 mm²/s [66 - 280 SUS*]

*SUS (Saybolt Universal Second)

Filtration

Required cleanliness level: ISO 4406 - 1999 Code 22/18/13 or better. Refer to Sauer-Danfoss publication *Hydraulic Fluids and Lubricants*, **520L0463** and *Design Guideline for Hydraulic Fluid Cleanliness*, **520L0467**.

Shaft load

The pump will accept radial and axial loads on its shaft, the maximum capacity being determined by direction and point of application of the load. Please contact your Sauer-Danfoss representative.

**Hydraulic Parameters
 (continued)**

Technical Data

Parameter		Units	Frame size		
			070	089	334
Max. displacement		cm ³ [in ³]	69.8 [4.26]	89.0 [5.43]	333.7 [20.36]
Charge pump displacement	options	cm ³ [in ³]	18.03 [1.10]		65.50 [4.00]
			12.30 [0.75]		-
Minimum speed		min ⁻¹ (rpm)	500		
Rated speed 1		min ⁻¹ (rpm)	3200	2900	1900
Maximum swash plate angle		degree	±18		
Mass moment of inertia of rotating group (without charge pump)		kg m ² · 10 ⁻³ [lbf ft ² · 10 ⁻³]	12.34 [292.8]	17.77 [421.7]	161.40 [3830.0]
Weight		kg [lb]	63 [139]	78 [172]	270 [595]

¹ for higher speeds contact your Sauer–Danfoss representative.

**Determination of
 Nominal Pump Sizes**

Use these formulae to determine the nominal pump size for a specific application:

Based on SI units

Based on US units

Output flow: $Q = \frac{V_g \cdot n \cdot \eta_v}{1000} \text{ l/min}$

$Q = \frac{V_g \cdot n \cdot \eta_v}{231} \text{ [US gal/min]}$

Input torque: $M = \frac{V_g \cdot \Delta p}{20 \cdot \pi \cdot \eta_m} \text{ N}\cdot\text{m}$

$M = \frac{V_g \cdot \Delta p}{2 \cdot \pi \cdot \eta_m} \text{ [lbf}\cdot\text{in]}$

Input power: $P = \frac{M \cdot n}{9550} = \frac{Q \cdot \Delta p}{600 \cdot \eta_t} \text{ kW}$

$P = \frac{M \cdot n}{63.025} = \frac{Q \cdot \Delta p}{1714 \cdot \eta_t} \text{ [hp]}$

Variables: SI units [US units]

- V_g = Displacement per rev. cm³/rev [in³/rev]
- p_{HD} = Outlet pressure bar [psi]
- p_{ND} = Inlet pressure bar [psi]
- Δp = $p_{HD} - p_{ND}$ bar [psi]
- n = Speed min⁻¹ (rpm)
- η_v = Volumetric efficiency
- η_m = Mechanical (torque) efficiency
- η_t = Overall efficiency ($\eta_v \cdot \eta_m$)

Servo Displacement Control (linear response)

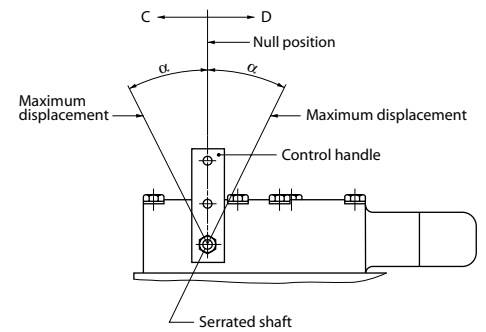
Regulated by the control handle on the servo valve, the swash plate can be infinitely varied in both directions with the help of the servo system. The pump displacement resulting from any control handle position can be established using the figures on this page.

The angle of the control handle for stroke initiation and for the final position of the stroke can vary from unit to unit within the range of the tolerance band. The inter-relation of flow direction, rotation of the pump and the control handle movement is shown below.

Pump flow direction

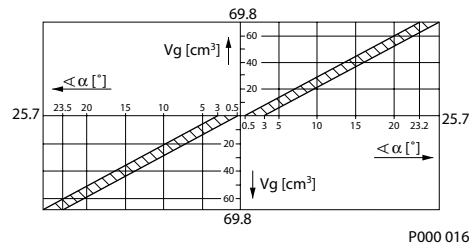
Flow direction changes with the direction of rotation and the control handle movement (see *besides*).

Pump rotation	Movement of control handle in direction	Pressure port OUT	Pressure port IN
CCW (Left)	C	B	A
	D	A	B
CW (Right)	C	A	B
	D	B	A



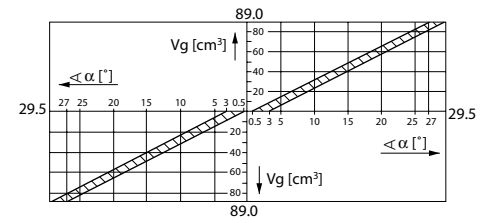
P000 013E

SPV2/070



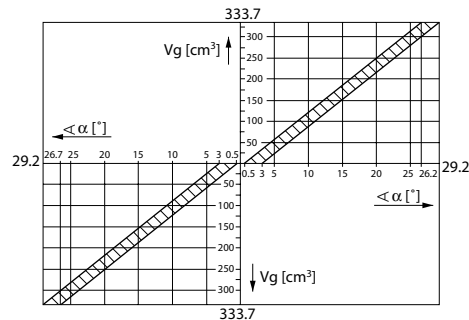
P000 016

SPV2/089



P000 017

SPV2/334



P000 021

Servo Displacement Control (linear response) (continued)

Reversing time

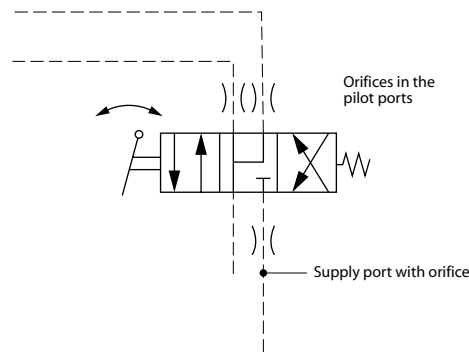
Time for the directional change of the flow from Q_{max} , across zero to Q_{max} , depending on the size of the control orifice fitted in the supply port to the servo valve (see *below*).

The values given assume movement of the control handle directly from one end position to the other.

Adjustment time of handle: < minimum reserving time
 Operating pressure: $\Delta p_2 = 210 \text{ bar [3046 psi]}$
 Speed: $n = 1450 \text{ min}^{-1} \text{ (rpm)}$
 System temperature: $50 \text{ }^\circ\text{C [122 }^\circ\text{F]}$
 Viscosity: $35 \text{ mm}^2/\text{s [164 SUS]}$

Frame size	Minimum reversing time (s) without orifice	Maximum reversing time (s) with orifice $\varnothing 0.66$ in supply port
070	1.0	9.3
089	1.1	9.0
334	5.6	43.8

Schematic diagram of servo valve with alternative orifice positions



**Servo Displacement
 Control (linear response)
 (continued)**

Reset time

Time for reducing the flow from either flow direction from Q_{max} to 0 releasing the control handle.

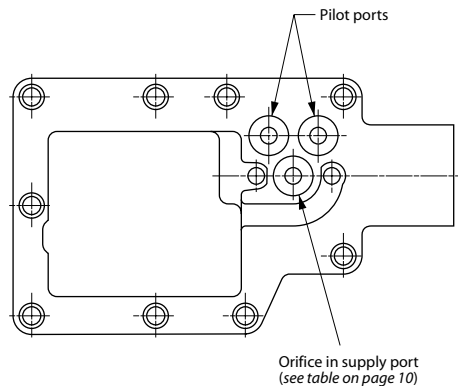
Assuming no mechanical blockage of the control handle's free return and assuming no orifices in the pilot ports:

Operating pressure: $\Delta p_2 = 210 \text{ bar [3046 psi]}$

System temperature: $50 \text{ }^\circ\text{C [122 }^\circ\text{F]}$

Viscosity: $35 \text{ mm}^2/\text{s [164 SUS]}$

Servo valve counter bored recesses for orifice insert



P000 057E

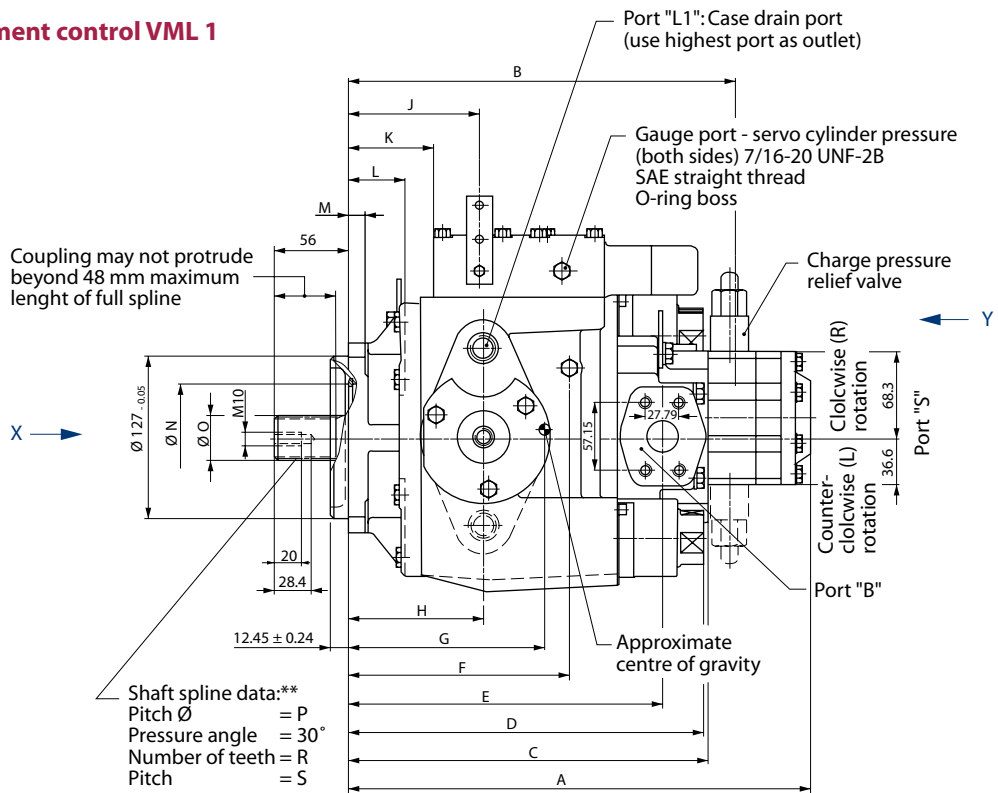
Frame size	Minimum reset time (s)
070	3.0
089	3.0
334	5.4

Changing reversing and reset time

Inserting one orifice in each of the pilot ports can extend the reversing time. The reset time will also be extended.

Inserting an orifice in one of the pilot ports only can extend the reversing time in one flow direction. The reset time will be extended only for this flow direction.

Configuration PS, displacement control VML 1



P005 106E

* Minimum and maximum angle α , (see section *Servo displacement control*).

** Shaft spline data: spline shaft with involute spline, according to SAE handbook, 1963, class 1, fillet root side fit.

Dimensions - mm [in]

Frame size	B	C	D	E	F	G	H	J	K	L	M	Ø N
070	315 [12.402]	294 [11.575]	305 [12.008]	259 [10.197]	188 [7.402]	146 [5.748]	112 [4.409]	120 [4.724]	84 [3.307]	48 [1.890]	16 [0.630]	84 [3.307]
089	328 [12.913]	307 [12.087]	312 [12.283]	271 [10.669]	195 [7.677]	140 [5.512]	118 [4.646]	129 [5.079]	91 [3.583]	49 [1.929]	17.5 [0.689]	98 [3.858]

Frame size	A ¹ Charge pump		Shaft spline				Bore Ø for shaft coupling
	12 cm ³	18 cm ³	Ø O	Ø P	R	S	
070	372 [14.646]	381 [15.000]	34.50 ^{-0.17} [1.358 ^{-0.0067}]	33.338 [1.313]	21 [0.827]	16/32	31.75 ^{+0.062} [1.250 ^{+0.0024}]
089	358 [14.094]	394 [15.512]	37.68 ^{-0.17} [1.483 ^{-0.0067}]	36.513 [1.438]	23 [0.906]	16/32	34.95 ^{+0.062} [1.376 ^{+0.0024}]

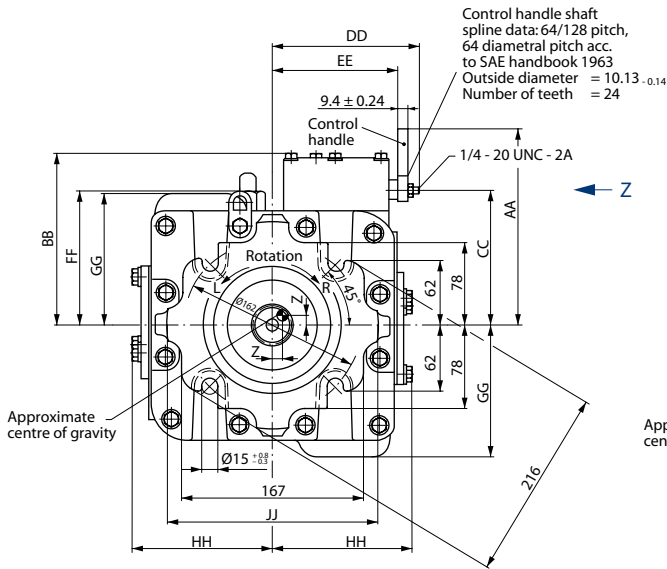
¹ Short version available on request. Please contact your local Sauer-Danfoss representative.

Dimensions - mm [in]

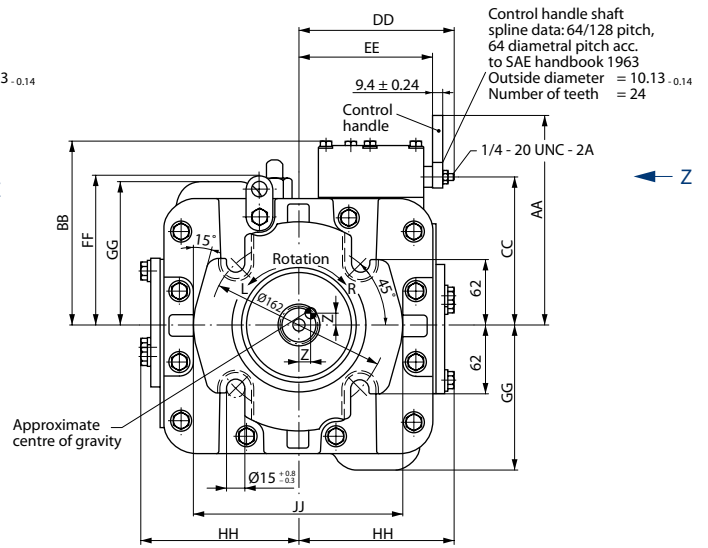
Frame size	T	U	V	W	X	Y	Z
070	71.4 [2.811]	112.7 [4.437]	105 [4.134]	108 [4.252]	60.5 [2.382]	85.8 [3.378]	9.5 [0.374]
089	77.7 [3.059]	128.7 [5.067]	115 [4.528]	119 [4.685]	65 [2.559]	95.2 [3.748]	12.7 [0.500]

Configuration PS, displacement control VML 1 (continued)

View X (for SPV 2/070 only)



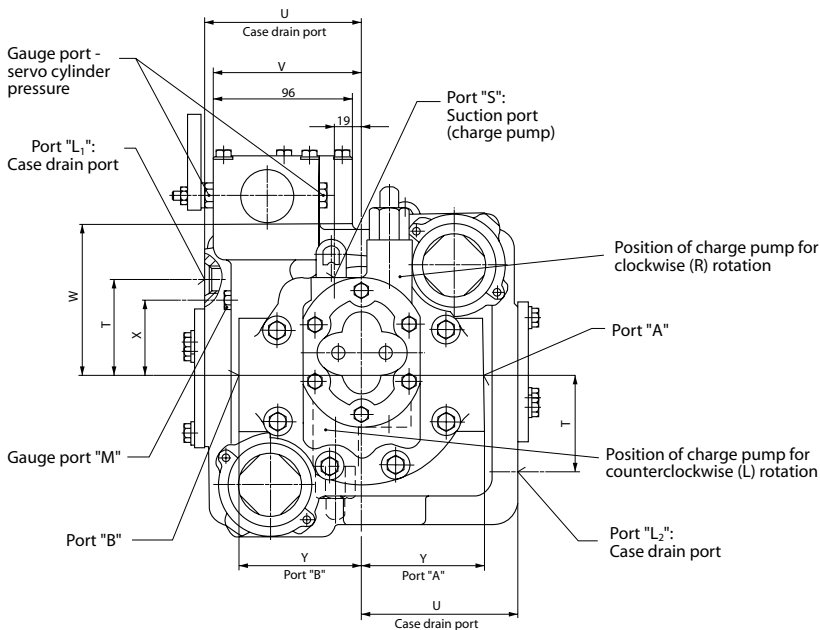
View X (for SPV 2/089 only)



P005 108E

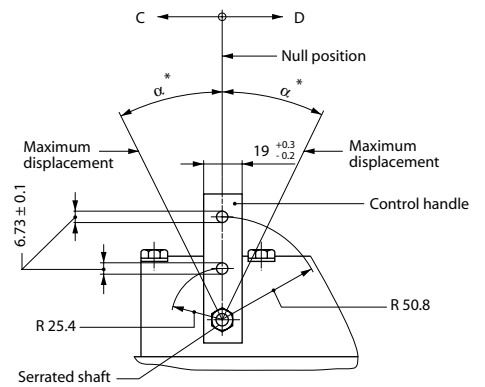
Frame size	AA	BB	CC	DD	EE	FF	GG	HH	JJ
070	187.6 [7.386]	162 [6.378]	128.6 [5.063]	133 [5.236]	113 [4.449]	126 [4.961]	123 [4.843]	130 [5.118]	194 [7.638]
089	198.6 [7.819]	173 [6.811]	139.6 [5.496]	144 [5.669]	123 [4.843]	140 [5.512]	134 [5.276]	148 [5.827]	194 [7.638]

View Y



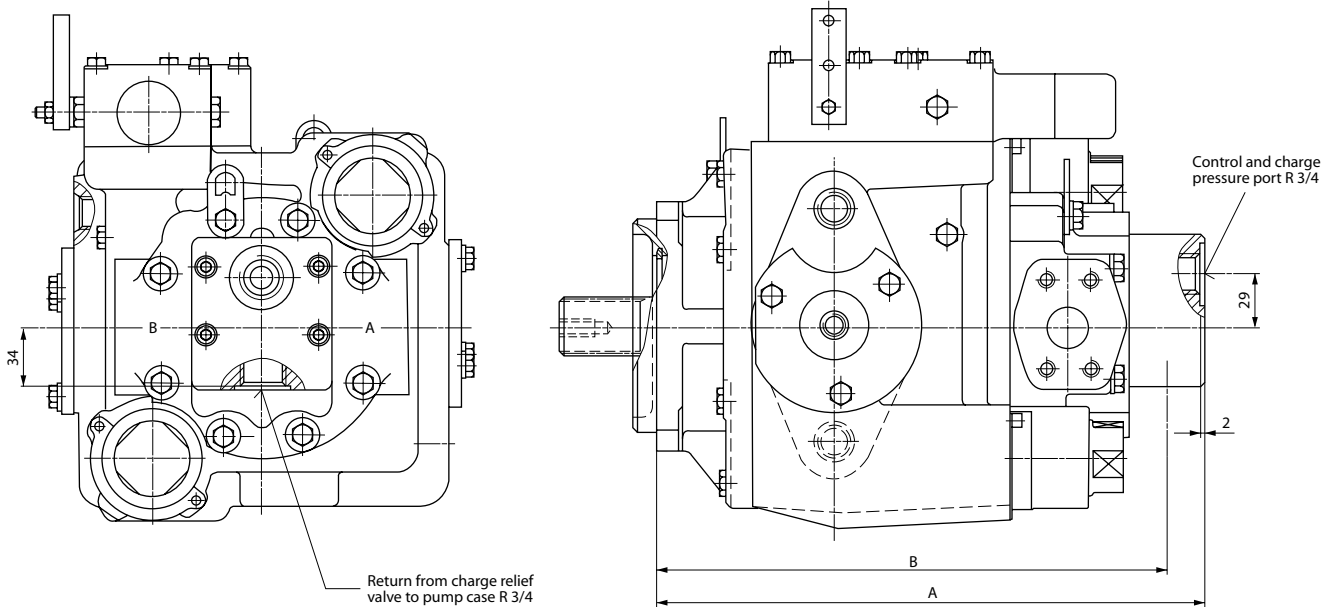
P005 107E

View Z



P000 022E

Configuration AA 010, displacement control VML 1

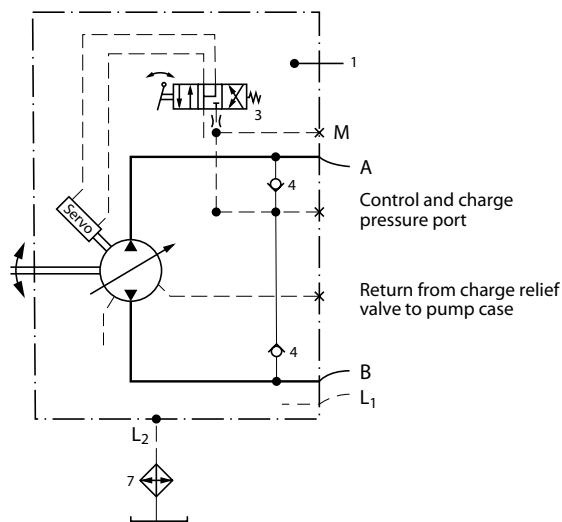


P000 009E

Dimensions - mm [in]

Frame Size	A	B	Weight kg [lb]
070	339 [13.346]	316 [12.441]	63.5 [140]
089	352 [13.858]	329 [12.953]	78.5 [173]

Circuit schematic

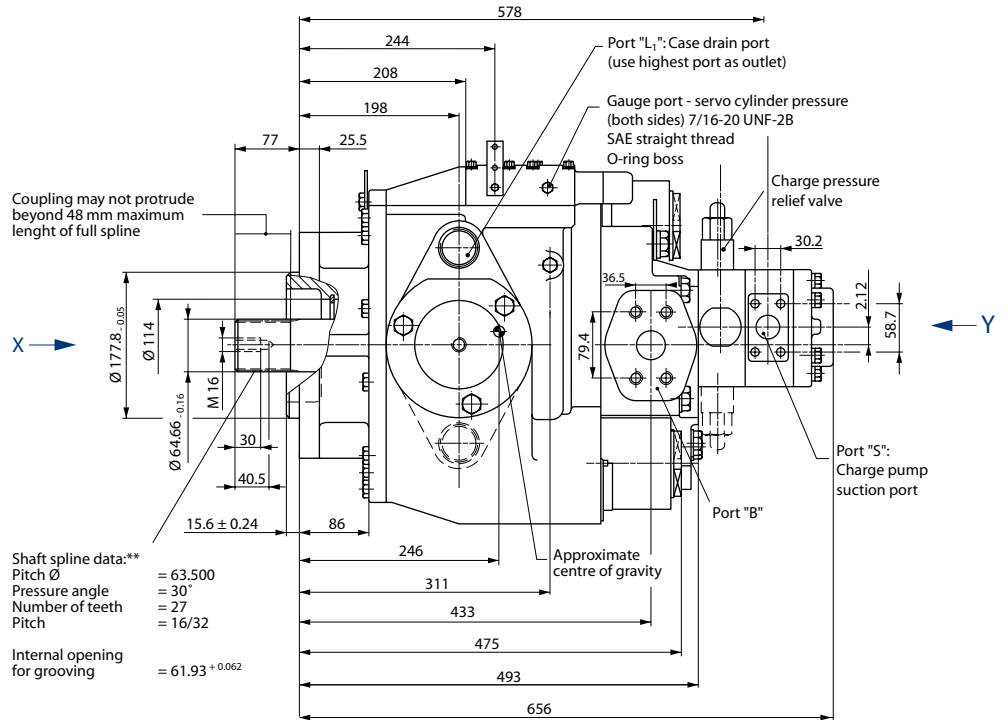


Designation:
 1 = Variable Displacement pump
 3 = Servo control valve
 4 = Charge check valve
 7 = Heat exchanger

Ports:
 A, B = Main pressure ports (working loop)
 L1, L2 = Drain ports
 M = Gauge port - charge pressure

P000 058E

**Configuration PS,
displacement control
VML 1**

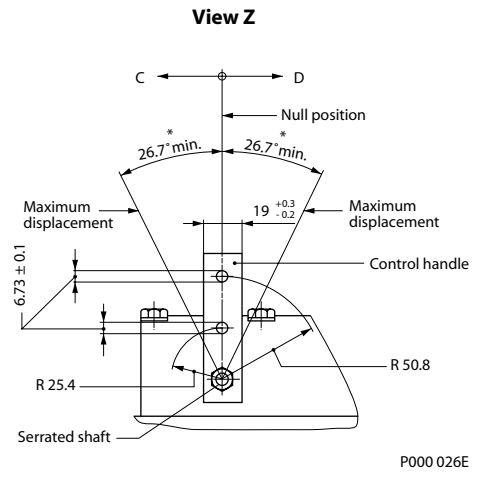
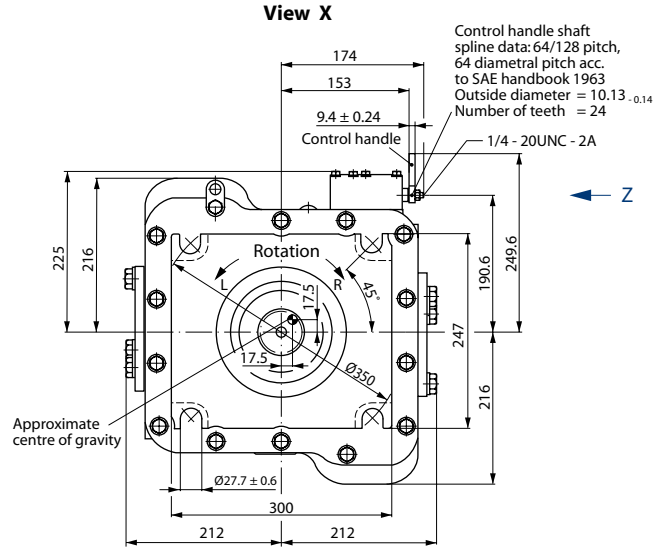
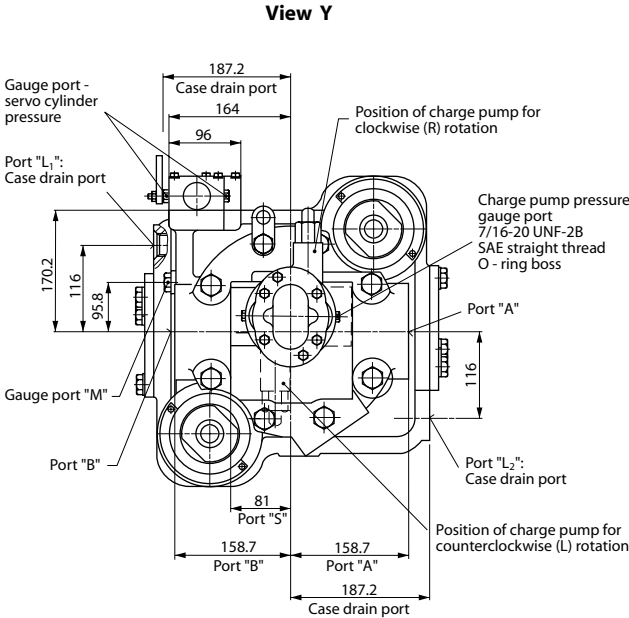


P005 115E

* Minimum and maximum angle α , (see section *servo displacement control*).

** Shaft spline data: spline shaft with involute spline, according to SAE handbook, 1963, class 1, fillet root side fit.

Configuration PS, displacement control VML 1 (continued)

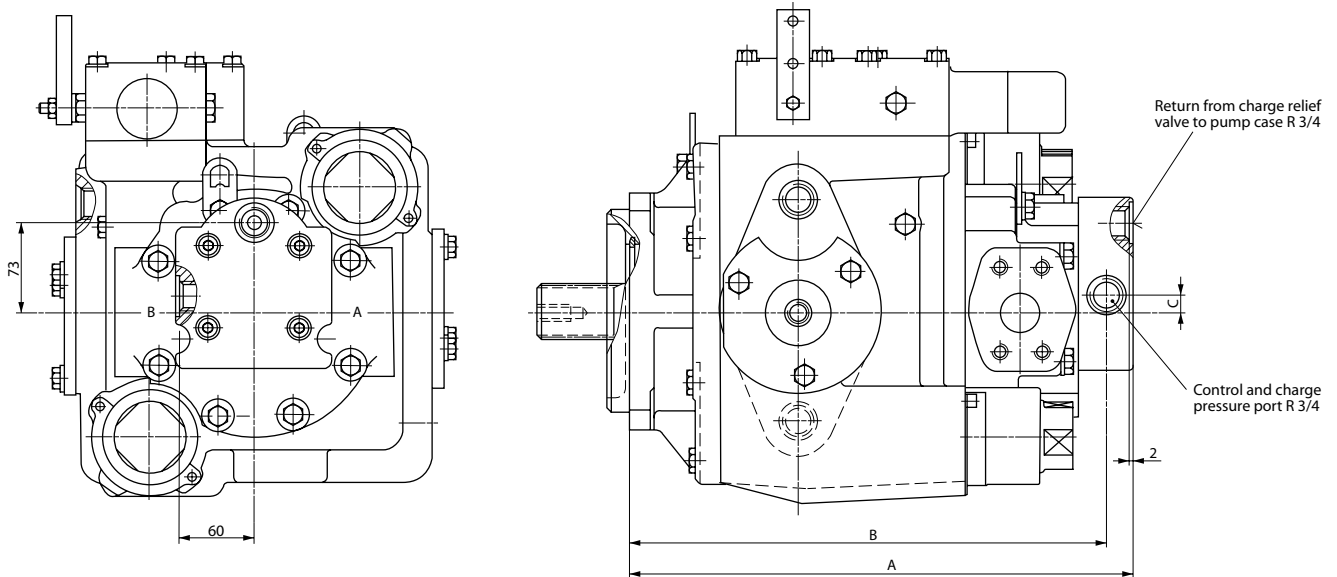


P005 111E

P000 026E

- Port A and B:** SAE flange, size 1 1/2 SAE split flange boss, 6000 psi, 4 threads, 5/8-11 UNC-2B, 35 deep
- Port L1, L2:** 1 7/8-12 UNF-2B, SAE straight thread, O-ring boss
- Port S:** SAE flange, 1 1/4 SAE split flange boss, 3000 psi, 4 threads, 7/16-14 UNC-2B, 28 deep
- Port M:** 7/16-20 UNF-2B, SAE straight thread, O-ring boss

Configuration AA 010, displacement control VML 1

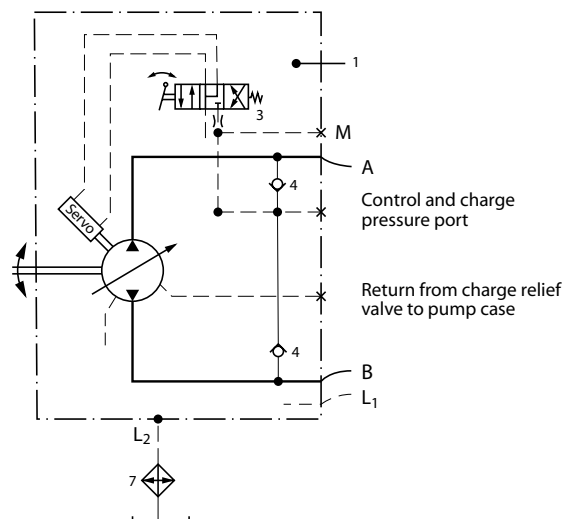


P000 010E

Dimensions - mm [in]

Frame size	A	B	C	Weight kg [lb]
334	546 [21.496]	520 [20.472]	21 [0.827]	264.5 [583]

Circuit schematic



Designation:

- 1 = Variable Displacement pump
- 3 = Servo control valve
- 4 = Charge check valve
- 7 = Heat exchanger

Ports:

- A, B = Main pressure ports (working loop)
- L1, L2 = Drain ports
- M = Gauge port - charge pressure

P000 058E



Products we offer:

- Bent Axis Motors
- Closed Circuit Axial Piston Pumps and Motors
- Displays
- Electrohydraulic Power Steering
- Electrohydraulics
- Hydraulic Power Steering
- Integrated Systems
- Joysticks and Control Handles
- Microcontrollers and Software
- Open Circuit Axial Piston Pumps
- Orbital Motors
- PLUS+1™ GUIDE
- Proportional Valves
- Sensors
- Steering
- Transit Mixer Drives

Members of the Sauer-Danfoss Group:

Comatrol

www.comatrol.com

Schwarz Müller-Inverter

www.schwarzmueller-inverter.com

Turolla

www.turollaocg.com

Hydro-Gear

www.hydro-gear.com

Sauer-Danfoss-Daikin

www.sauer-danfoss-daikin.com

Sauer-Danfoss is a global manufacturer and supplier of high-quality hydraulic and electronic components. We specialize in providing state-of-the-art technology and solutions that excel in the harsh operating conditions of the mobile off-highway market. Building on our extensive applications expertise, we work closely with our customers to ensure exceptional performance for a broad range of off-highway vehicles.

We help OEMs around the world speed up system development, reduce costs and bring vehicles to market faster.

Sauer-Danfoss – Your Strongest Partner in Mobile Hydraulics.

Go to www.sauer-danfoss.com for further product information.

Wherever off-highway vehicles are at work, so is Sauer-Danfoss.

We offer expert worldwide support for our customers, ensuring the best possible solutions for outstanding performance. And with an extensive network of Global Service Partners, we also provide comprehensive global service for all of our components.

Please contact the Sauer-Danfoss representative nearest you.

Local address:

Sauer-Danfoss (US) Company
2800 East 13th Street
Ames, IA 50010, USA
Phone: +1 515 239 6000
Fax: +1 515 239 6618

Sauer-Danfoss ApS
DK-6430 Nordborg, Denmark
Phone: +45 7488 4444
Fax: +45 7488 4400

Sauer-Danfoss GmbH & Co. OHG
Postfach 2460, D-24531 Neumünster
Krokamp 35, D-24539 Neumünster, Germany
Phone: +49 4321 871 0
Fax: +49 4321 871 122

Sauer-Danfoss-Daikin LTD.
Shin-Osaka TERASAKI 3rd Bldg. 6F
1-5-28 Nishimiyahara, Yodogawa-ku
Osaka 532-0004, Japan
Phone: +81 6 6395 6066
Fax: +81 6 6395 8585